



# MOBILE CONTROL

Part of the Assist product family



## The Service

End users have a growing expectation of how they consume IT in the workplace. With the average user now owning 3 devices, they want to be able to continue that experience both in + out of the office.

This growing device sprawl can be a huge task for IT to manage and ensuring the users are safe, the company's data is secure and the business remains data compliant, can become a real burden to the company.

Mobile control is a powerful and scalable, easy to manage + configure, mobile device management tool. Never compromise on privacy or productivity, while always empowering users to be at their most efficient.

## The Features

**Configure detailed security settings**

**Monitor data usage**

**Location tracking**

**Visibility of device ownership + handset details**

**Remotely lock, set passcodes or wipe devices**

## The Benefits

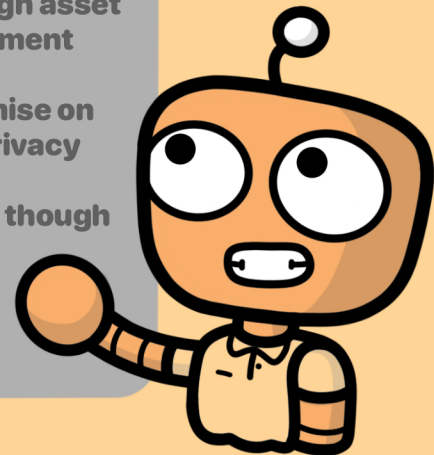
**Protect against device loss or theft**

**Secure company data**

**Cost control through asset expense management**

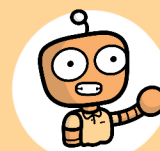
**Doesn't compromise on productivity or privacy**

**Simply managed, through one easy portal**



Explore our 5 product families to find out more about the IT solutions we can offer your business.

PCS



[www.pcs-systems.com](http://www.pcs-systems.com)

08452 41 41 55